

QUICKCOLD 640f

HIGH QUALITY, SAFE & SMART COLD
TRANSPORTATION ENABLER.



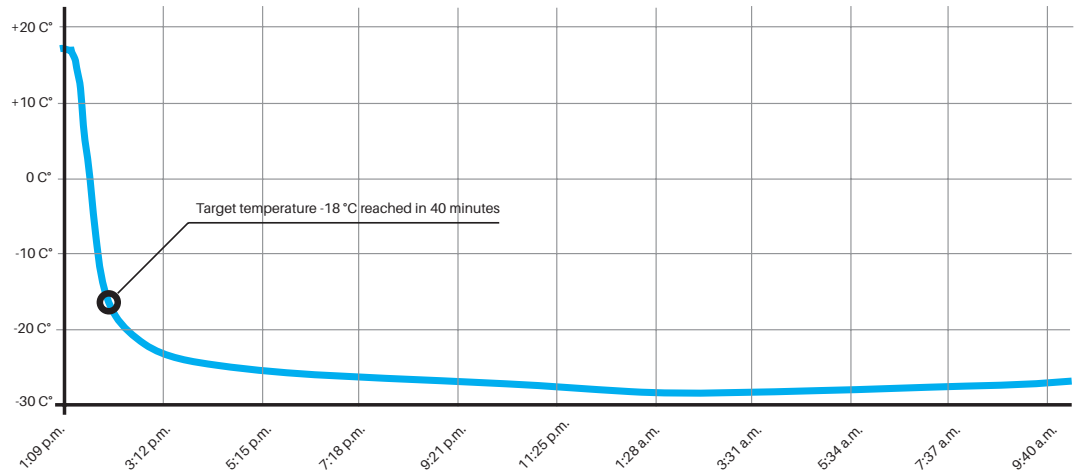
PRODUCT SPECIFICATIONS:

System name:	Quickcold 640f	
Cartridge (x2) filled with dry ice pellets:	2 x 2 gal	/ 2 x 7.7 L
External dimensions:	51.2 in	/ H 1300mm
	47.2 in	/ L 1200mm
	39.3 in	/ W 1000mm
Total payload:	137.3 gal	/ 520-L
Tare weight:	219,3 lb	/ 99,5 Kg



-18 °C
-7.6 °F

Target temperature -18 °C reached in 40 minutes.
Ambient temperature +18 °C - +20 °C.
Test was conducted with payload of 41 litres of frozen water.



COMPONENTS:

- GPS/GSM based tracking
- Remote control and tracking over cloud of:
- Shipment details
- Temperature range setting
- Payload temperature tracking
- Location tracking

- Optional: different views for different user profiles
- Optional: wheels



PRODUCT FEATURES:

- Uptime 24h
- Temperature range -24 °C - -18 °C
- Total payload space: 520-L
- Self regulated cold chain
- Real time monitoring and tracking
- Easy cold cartridge exchange and refill
- Optimized for Europallet: 1000mm x 1200mm (similar to 40" x 48")
- Freezing with dry ice cartridges (CO2)
- Theoretical endless uptime

SERVICE FEATURES:

- Automatic temperature measurement
- Automatic temperature control in a set range
- Local control client for iOS and Android for temperature range setting
- Current payload temperature display
- Two temperature zones

REMOTE CONTROL AND TRACKING OVER CLOUD:

- Shipment details monitoring
- Temperature range setting
- Payload temperature tracking
- Location tracking



FURTHER DETAILS OF OUR PRODUCTS ARE AVAILABLE TO CLIENTS AND SELECTED REGISTERED USERS THAT ARE LOGGED INTO OUR WEBSITE AT WWW.VAKAVA.COM.

**Contact us:
info@vakava.com
tel: +358 400 205 040**