

# QUICKCOLD 120c

HIGH QUALITY, SAFE & SMART COLD  
TRANSPORTATION ENABLER.



## PRODUCT SPECIFICATIONS:

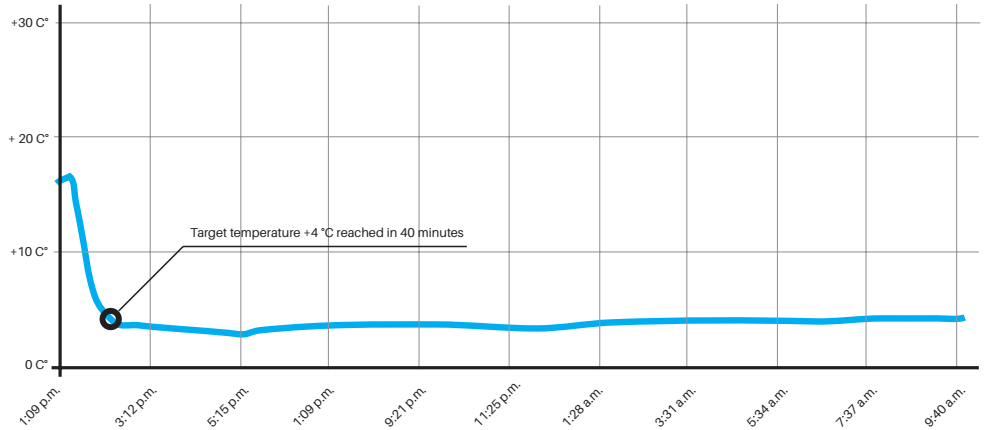
System name:	Quickcold 120c	
Cartridge (x3) filled with dry ice pellets:	3 x 0.66 gal /	3 x 2.5 L
External dimensions:	20 in /	H 510mm
	23.6 in /	L 600mm
	39.3 in /	W 1000mm
Total payload:	31.7 gal /	120-L
Tare weight:	55.1 lb /	25 Kg



**+4 °C**

**+39.2 °F**

Target temperature +4 °C reached in 40 minutes.  
Ambient temperature +18 °C - +20 °C.



## COMPONENTS:

- GPS/GSM based tracking
- Remote control and tracking over cloud of:
- Shipment details
- Temperature range setting
- Payload temperature tracking
- Location tracking

Optional: different views for different user profiles

Optional: wheels



# PRODUCT FEATURES:

- Uptime 24h,
- Temperature range 0 °C - +4 °C
- Total payload space: 120-L
- Self regulated cold chain
- Real time monitoring and tracking
- Easy cold cartridge exchange and refill
- Optimized for Europallet: 1000mm x 1200mm (similar to 40" x 48")
- Freezing with dry ice cartridges (CO2)
- Theoretical endless uptime

# SERVICE FEATURES:

- Automatic temperature measurement
- Automatic temperature control in a set range
- Local control client for iOS and Android for temperature range setting
- Current payload temperature display
- Two temperature zones

# REMOTE CONTROL AND TRACKING OVER CLOUD:

- Shipment details monitoring
- Temperature range setting
- Payload temperature tracking
- Location tracking



**FURTHER DETAILS OF OUR PRODUCTS ARE AVAILABLE TO CLIENTS AND SELECTED REGISTERED USERS THAT ARE LOGGED INTO OUR WEBSITE AT [WWW.VAKAVA.COM](http://WWW.VAKAVA.COM).**

**Contact us:  
[info@vakava.com](mailto:info@vakava.com)  
tel: +358 (0) 40 139 9999**