

QUICKCOLD 640d

HIGH QUALITY, SAFE & SMART COLD
TRANSPORTATION ENABLER.



PRODUCT SPECIFICATIONS:

System name: Quickcold 640d

Cartridge (x2) filled with

dry ice pellets: 2 x 2 gal / 2 x 7.7 L

External dimensions: 51.2 in / H 1300mm

47.2 in / L 1200mm

39.3 in / W 1000mm

Total payload: 137.3 gal / 520-L

Freezer payload: 39.6 gal / 150-L

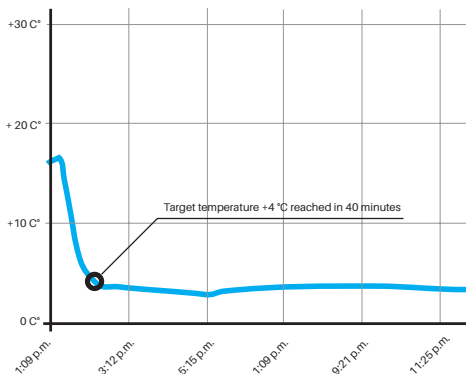
Fridge payload: 97.7 gal / 370-L

Tare weight: 219,3 lb / 99,5 Kg



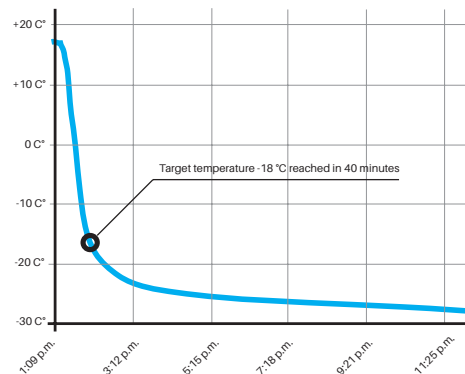
+4 °C
+39.2 °F

Target temperature +4 °C reached in 40 minutes. Ambient temperature +18 °C - +20 °C. Test was conducted with payload of 155 litres of water.



-18 °C
-7.6 °F

Target temperature -18 °C reached in 40 minutes. Ambient temperature +18 °C - +20 °C. Test was conducted with payload of 41 litres of frozen water.



COMPONENTS:

- GPS/GSM based tracking
- Remote control and tracking over cloud of:
- Shipment details
- Temperature range setting
- Payload temperature tracking
- Location tracking

- Optional: different views for different user profiles
- Optional: wheels



PRODUCT FEATURES:

- Uptime 24h
- -24 °C in frozen compartment and chilled compartment +4 °C
- Total payload space: 520-L
- Self regulated cold chain
- Real time monitoring and tracking
- Easy cold cartridge exchange and refill
- Optimized for Europallet: 1000mm x 1200mm (similar to 40" x 48")
- Freezing with dry ice cartridges (CO2)
- Theoretical endless uptime

SERVICE FEATURES:

- Automatic temperature measurement
- Automatic temperature control in a set range
- Local control client for iOS and Android for temperature range setting
- Current payload temperature display
- Two temperature zones

REMOTE CONTROL AND TRACKING OVER CLOUD:

- Shipment details monitoring
- Temperature range setting
- Payload temperature tracking
- Location tracking



FURTHER DETAILS OF OUR PRODUCTS ARE AVAILABLE TO CLIENTS AND SELECTED REGISTERED USERS THAT ARE LOGGED INTO OUR WEBSITE AT WWW.VAKAVA.COM.

**Contact us:
info@vakava.com
tel: +358 400 205 040**